

PATTERSON SQUARE

N 10°46'13" W
133.60'

133.60'

PT. LOT 45

HARRIS Street

48.0'

HA

S

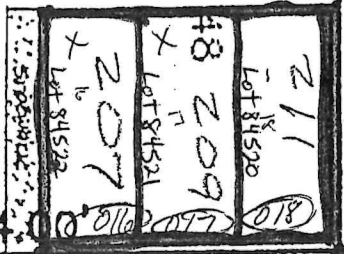
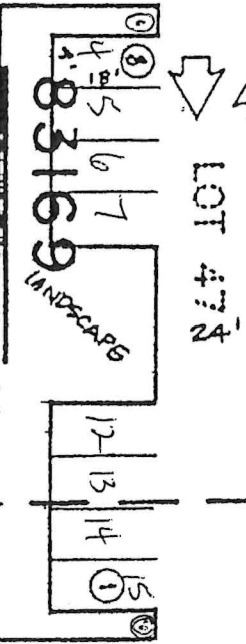
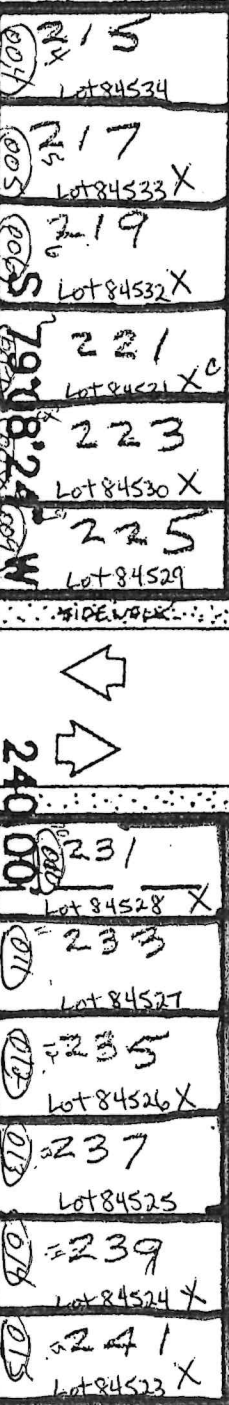
FIRST STREET

100.44' P/W

S. 79°08'24" W
298.51'

29,760 SQ. FT.
0.683 AC.

PARK 19 S 79°08'24" W 1' 240.00'



24

PATTERSON SQUARE CITY

N

N 10°

N. PATTERSON

Staff 5/2011
Project # 24